

City of
Fitchburg



Department of
Public Works

Mar 30 2022 1:27 pm

COMMISSIONER

301 Broad Street
978-829-1910
978-345-9687 FAX

STREETS & PARKS

301 Broad Street
978-829-1900
978-345-9687 FAX

WASTEWATER

166 Boulder Drive, Suite 108
978-345-9622
978-345-9623 FAX

SEWER COLLECTION

301 Broad Street
978-829-1905
978-345-9687 FAX

WATER

1200 Rindge Road
978-345-9616
978-345-9555 FAX

**ENGINEERING
PLANNING**

301 Broad Street
978-829-1917
978-345-9687 FAX

CEMETERIES

115 Mount Elam Road
978-345-9578
978-345-9686 FAX

City of Fitchburg Department of Public Works – Water Division

March 30, 2022

NOTICE OF PUBLIC HEARING

Notice is hereby given that application has been made on behalf of the City of Fitchburg Department of Public Works – Water Division for the approval of MassDEP for the City of Fitchburg D.P.W. – Division of Water Supply to acquire certain lands or rights of land in the Town of Ashburnham for public water supply protection. Said land is located at 220 Russell Hill Road and is identified on Ashburnham's Assessor map #39, Lot #22.

As required by Massachusetts General Law Chapter 40 Section 41, the City of Fitchburg Department of Public Works – Water Division will hold a public hearing. This hearing will be held on **April 13, 2022 at 10:00 a.m.** at:

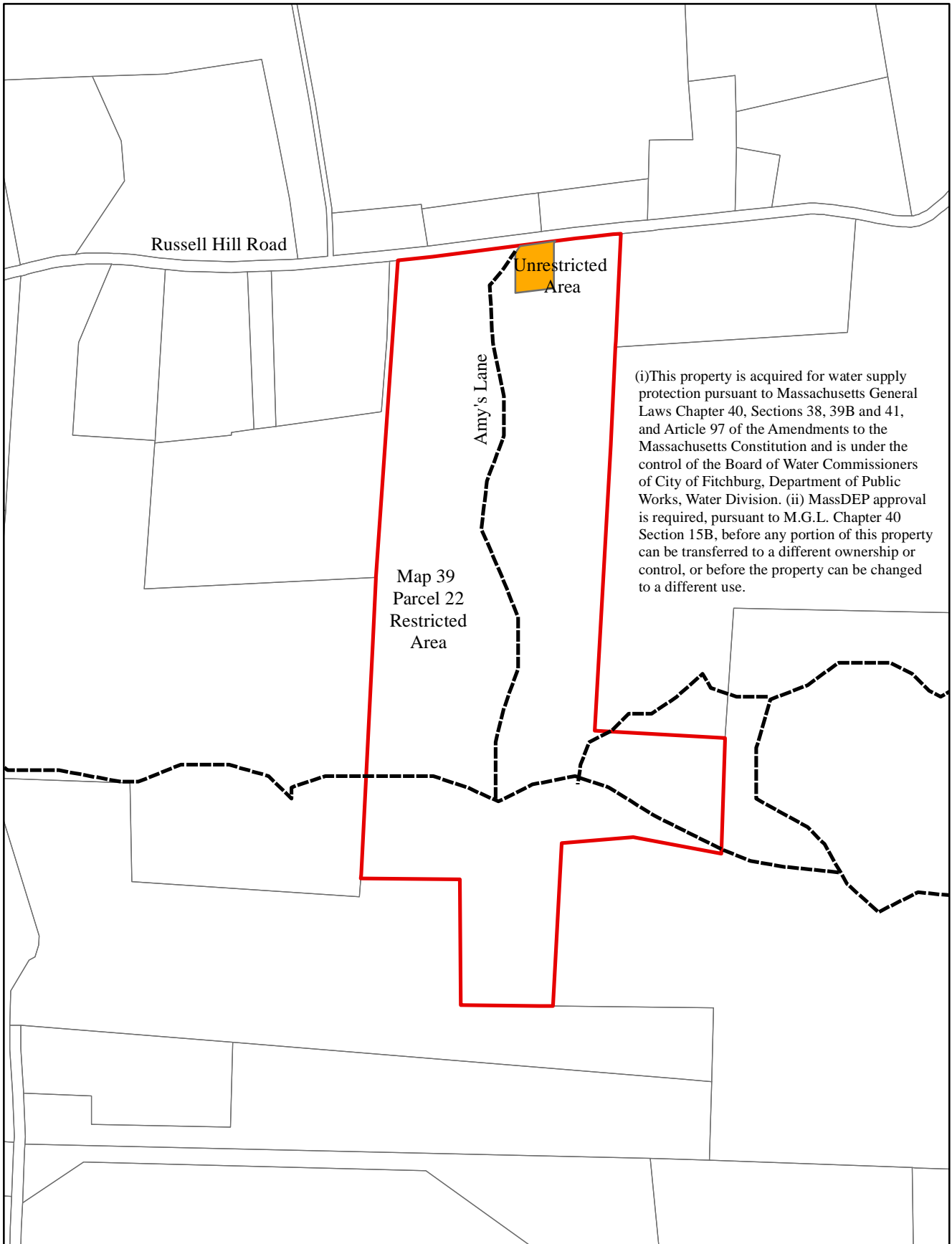
**Fitchburg DPW – Division of Water Supply
1200 Rindge Road
Fitchburg, MA 01420**

The map showing the land in question is on file at MassDEP, Drinking Water Program, 8 New Bond Street, Worcester, MA 01606 and in the office of the City of Fitchburg Department of Public Works – Water Division and Fitchburg City Clerk's office and on the public water system's website. Said map is entitled Kerlinger CR Assessors Map, dated February 2022.

Comments pertaining to this matter may be made orally at the time of the hearing or submitted in writing at any time before April 13, 2022, 5:00 p.m., addressed to Department of Environmental Protection, Drinking Water Program Chief, 8 New Bond St, Worcester, MA 01606.

City of Fitchburg D.P.W. – Division of Water Supply

Kerlinger CR Assessors Map



Legend

- CR Exclusion
- Assessors Parcels
- Kerlinger CR
- Trail

0 0.05 0.1 Miles



Source: MassGIS
February 2022

